

THINK TANK  
BY LAB45

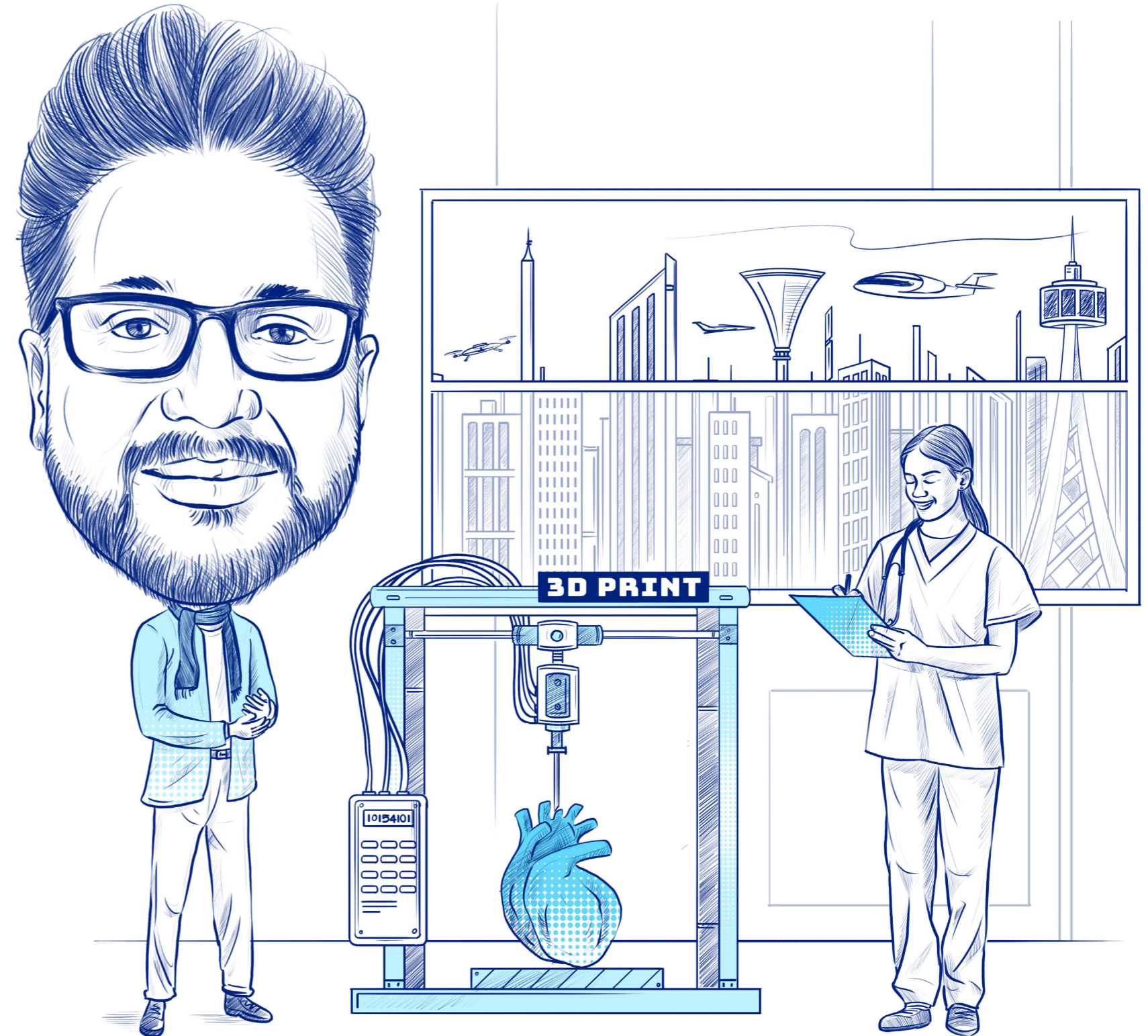
# What will it Mean To be a “Human Being” in 2100?

**Break  
the box**

Arvind Ravishunkar explores what shapes humanity’s future amid technology’s revolutionary impact on our existence.

This is the most important question that we will have to answer in this century.

In the last few million years, technology (from stone age tools to computers) has been an enabler for us to lead better lives (i.e lifestyles) and have improved life spans (i.e health). While some technologies have made their way into the human body such as pacemakers,



*Here we capture*  
**10 such technologies that you  
will want to keep your eyes on.**

---

1. Gene editing (CRISPR)

---
2. General artificial intelligence (AGI)

---
3. Exoskeletons

---
4. Neuralink

---
5. Mind Uploading with Nectome (Y Combinator)

---
6. Journey to Mars

---
7. Mind-Mind Communication

---
8. 3d Printing Organs

---
9. Ectolife

---
10. Living Robots

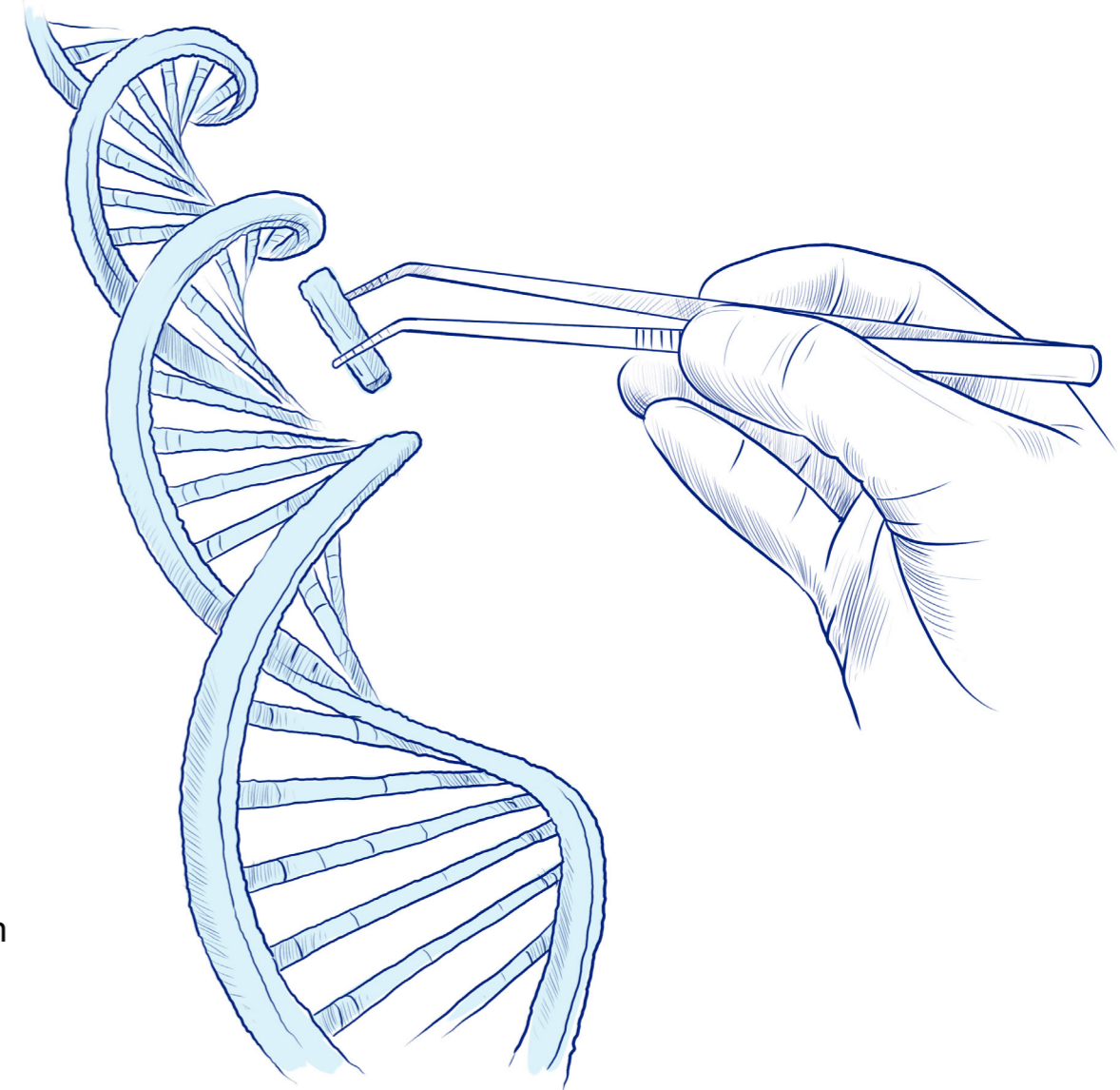
---

**So far, technology has  
influenced lifestyle, but going  
forward, technology will shape  
the definition of a human being.**

metallic joints, hip replacements, knee replacements, cataracts, etc, most of these technologies have been incremental changes that fix us.

In the last few years, a suite of new technology breakthroughs are emerging that are going to raise some important questions about how humans will evolve. These technologies are not just enablers but fundamental game changers that will modify what it means to be a human being. They can lead to stronger, faster, more intelligent, more agile and non-terrestrial humans. While some of these technologies exist, some are conceptual.

With gene editing, mind uploading, exoskeletons, general artificial intelligence, non-biological reproduction and martian living, the definition of what it means to be human will be a leading question in this century.





Ambitions Realized.

---

**Wipro Limited**

Doddakannelli, Sarjapur Road  
Bengaluru – 560 035, India

Tel: +91 (80) 2844 0011

Fax: +91 (80) 2844 0256

[wipro.com](http://wipro.com)

**Wipro Limited** (NYSE: WIT, BSE: 507685, NSE: WIPRO) is a leading technology services and consulting company focused on building innovative solutions that address clients' most complex digital transformation needs. Leveraging our holistic portfolio of capabilities in consulting, design, engineering, and operations, we help clients realize their boldest ambitions and build future-ready, sustainable businesses. With over 250,000 employees and business partners across 66 countries, we deliver, on the promise of helping our customers, colleagues, and communities thrive in an ever-changing world.

For more information, please write to us at [info@wipro.com](mailto:info@wipro.com)