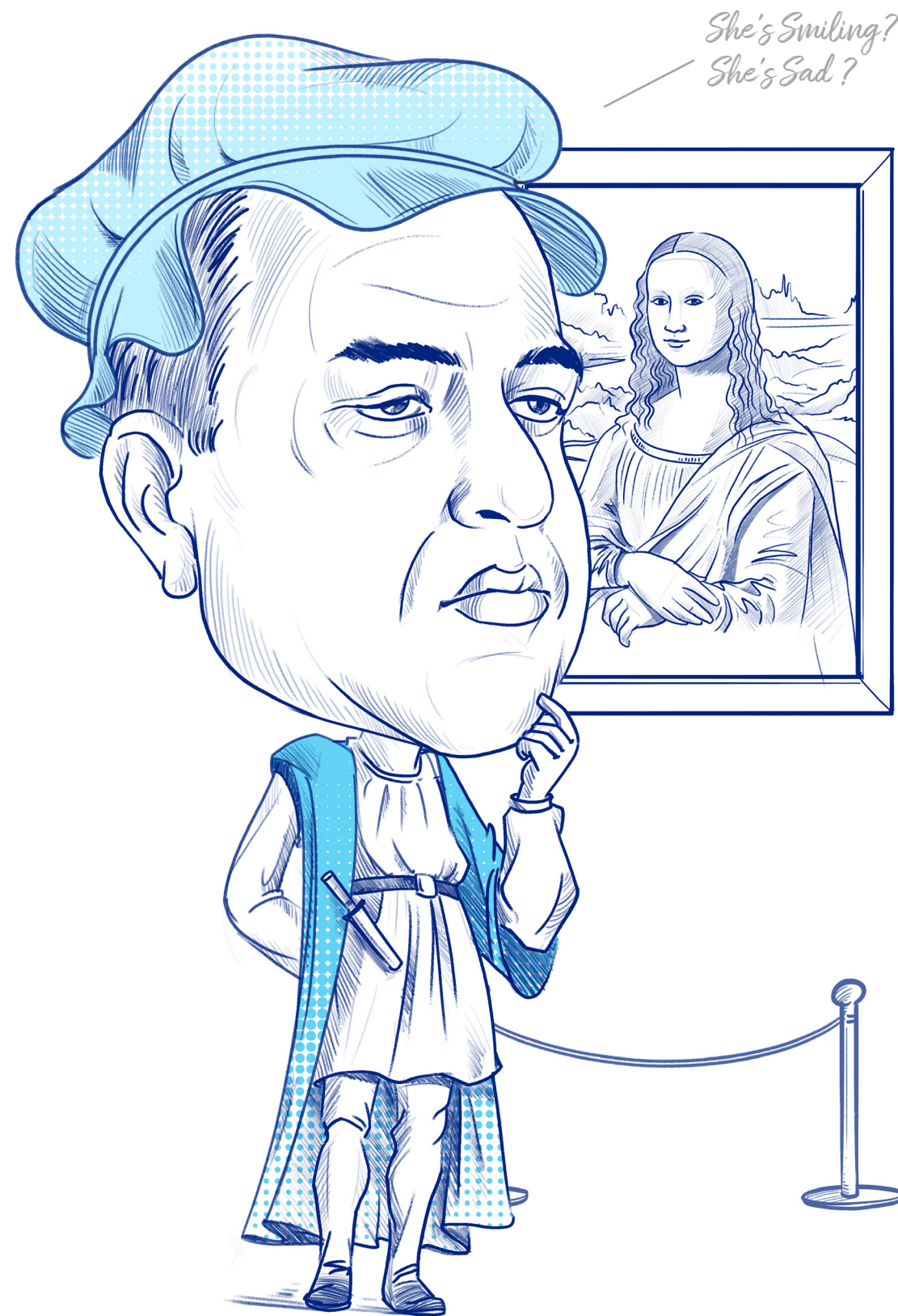
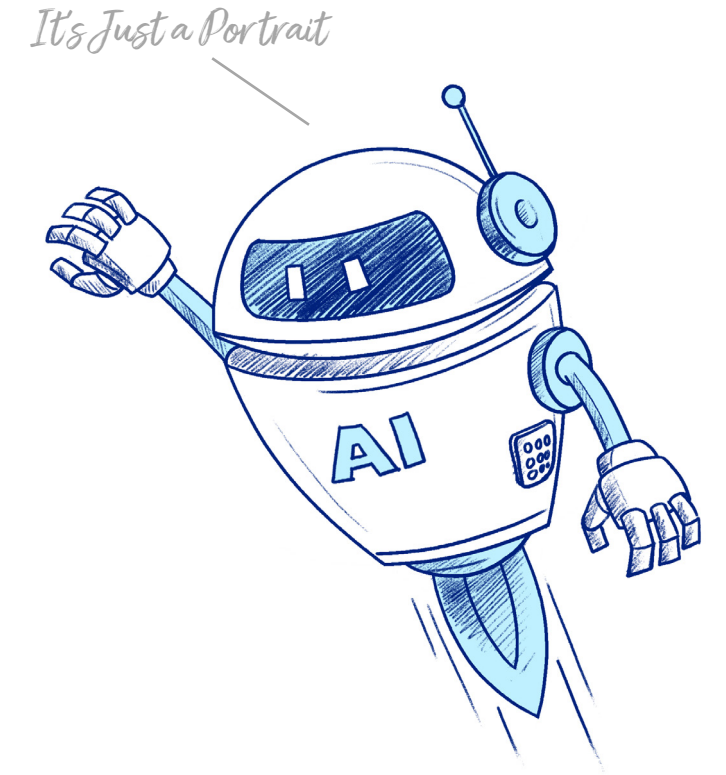


THINK TANK
BY LAB45



*Generative AI vs.
Human Creativity*

A dystopian future or a utopian dream?



**Break
the box**

Author Nagendra Singh channels Leonardo da Vinci to question the creative potential of generative AI.

Human evolution and progress have always been powered by creativity and diversity of thought. Our unfettered ideas and unique perspectives have given rise to vibrant cultures, bound societies together, and shaped our shared values and beliefs. With creativity as the driving force behind innovation, exploration, and discovery, we can break free from the

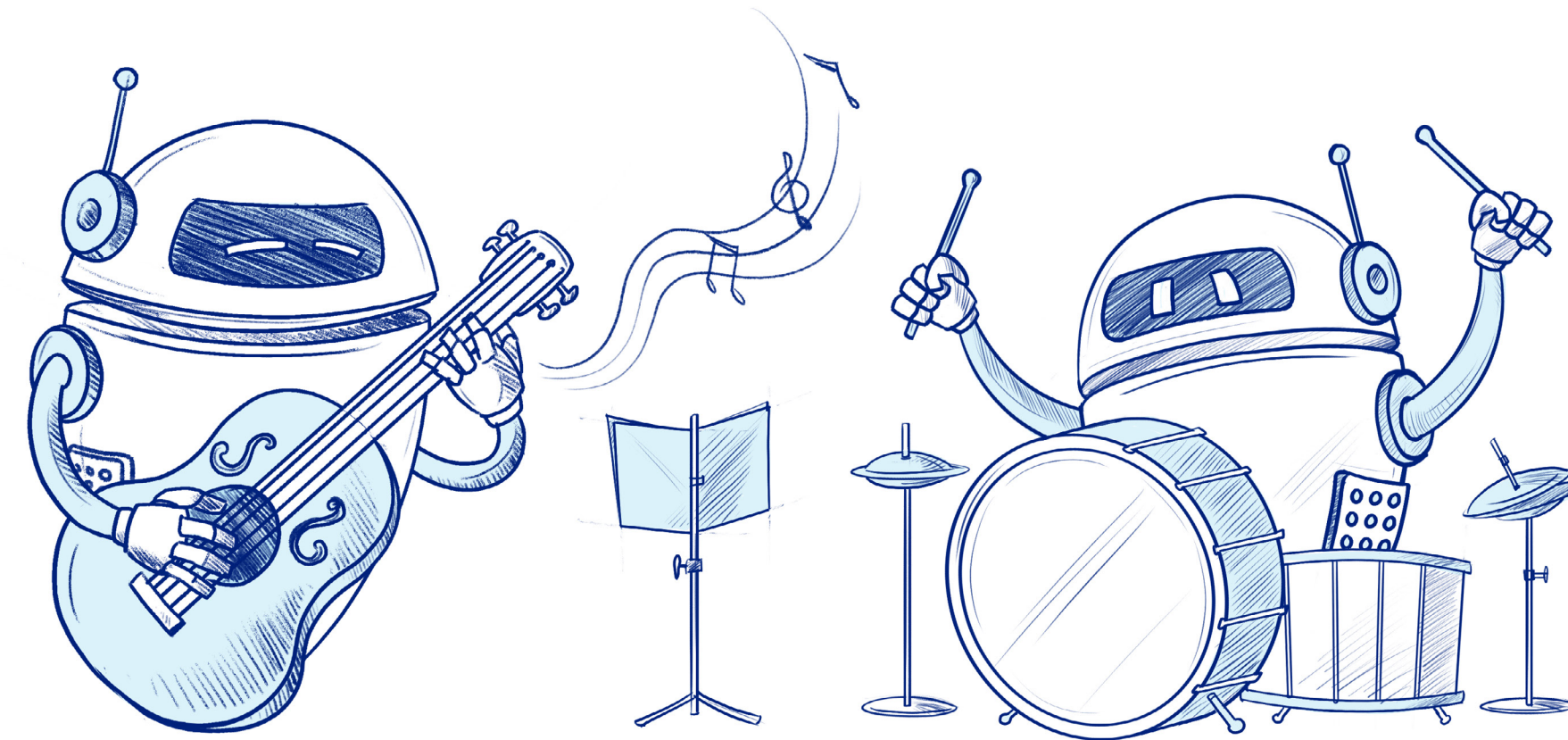
constraints of convention and chart new horizons. Through our distinct viewpoints, we enrich our cultures with diversity and vitality, driving our ongoing evolution as a society.

As Gen-AI becomes more widespread and integrated into our daily lives, a contrarian view arises: will Gen-AI perpetuate the biases and limitations of its creators, potentially hampering the originality and unique perspectives in creativity of humans, leading them down a unidimensional path of thought and progress? By relying on Gen-AI, will we be allowing artificial intelligence to control and dictate our ideas, our thoughts, leading us to a stagnant state, by hindering our ability to evolve and grow as a society?

Can Machines

Truly Create Like Humans?

Creativity can be characterised as the ability to generate novel and valuable ideas that inspire and engage other human beings. In the context of language, creativity may involve the use of words, phrases, and structures in new and innovative ways to convey a message or evoke an emotional response. In music, creativity may involve the creation of original melodies, harmonies, or lyrics that express a unique vision or emotion. In art, creativity may involve the creation of original and aesthetically



appealing visual representations of ideas, emotions, or experiences. In poetry and prose, creativity may involve the use of language to craft original and evocative literary works that convey meaning, imagery, and emotion in distinctive ways.

Despite the inherent uniqueness and complexity of human creativity, the rise of generative AI tools has sparked debates about the potential impact of technology on human creativity.

Human creativity is inherently shaped by their intuition, experiences, motivation, inspirations, and consciousness. However, generative AI tools such as ChatGPT lack emotions and motivations required to navigate the world as humans do, they lack the capacity to experience or react to situations the way humans do, leading to limitations in their ability to be creative as humans. It raises the question: how will societies and humans evolve in a post-generative ai world? Will we become a part of a uni-dimensional society?

The Intersection

of Gen-AI and Human Creativity: Exploring the Boundaries of Music Creation

In exploring the limitations of generative AI on human creativity, it is worth considering the impact on the creation and expression of music, a language that speaks to the soul.

Music is a language that speaks to the soul, expressing emotions and ideas that cannot be captured by words alone. Musicians, with their unique perspectives and experiences, have created some of the most powerful and moving pieces of music in human history.

The potential of Gen-AI to revolutionize music creation is boundless, as it can generate unique and complex compositions free from human biases and limitations. For example, Amper Music, an AI music platform, has used generative AI to produce unique and original film and video game music.

However, while AI-generated music can expand our understanding of music, relying solely on it may limit human creativity and hinder cultural evolution, as musicians could lose touch with their inner voices and unique perspectives that make their music so

powerful. AI-generated music may lack the depth and emotional complexity of true artistic expression, resulting in sterile and soulless compositions that fail to connect with human emotions. It raises questions about the nature of creativity, the role of technology in human expression, and the limits of our understanding of the “new” art form.

Limitations of Using Human Feedback for AI-Generated Music

Gen-AI creates music using reinforcement learning with human feedback (RLHF), which trains AI algorithms by learning from human feedback to generate music that pleases the users. While human feedback may seem like a valuable tool to improve music, it can actually limit the ability of musicians to create music that truly comes from their soul. Musicians and artists are supposed to create music based on their own unique perspective and experiences, not necessarily to just to cater to the preferences of the masses.

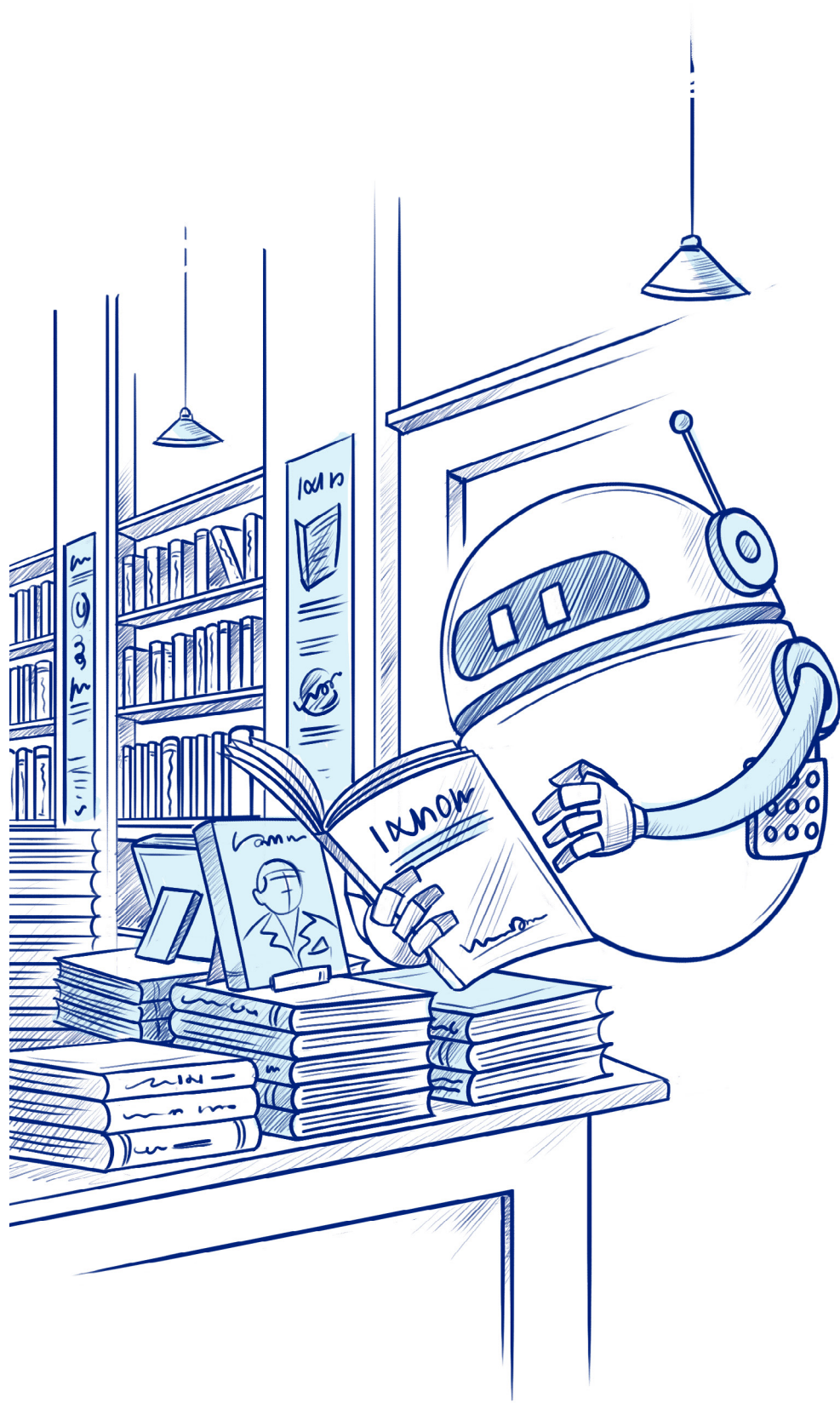
While Gen-AI relies on human feedback for music creation, other platforms like Spotify use user behavior data to monitor which songs listeners like, which songs they add to their playlist, what are their repeat patterns, where do they pause, where do they skip the song, what comments are they giving and other metrics. They then

The potential of Gen-AI to revolutionize music creation is boundless, as it can generate unique and complex compositions free from human biases and limitations.

use this data as a “feedback loop” for the creators of the music so as to help them create better music. This feedback loop can stifle creativity by taking away the multidimensionality of music and forcing the creators of the music to make music that is uni-dimensional.

When musicians create music based on user feedback, they are no longer expressing their own unique perspective, but rather trying to fit into a preconceived mould of what is popular or trending. This uni-dimensional music lacks the depth and emotional complexity that comes from true artistic expression.

By limiting the ability of musicians to listen to their soul and express themselves freely, generative AI that relies



on human feedback for music creation, can limit the evolution of creativity. For instance, an AI-generated song may only mimic popular songs and might lack the originality and creativity of a song created by a human composer. Human creativity is driven by the freedom to express, which drives cultural evolution, limiting the freedom to express can hinder the evolution of culture and humanity.

The Constrictive Nature **of Generative AI in the Journey of Human Evolution**

Generative AI tools may also be altering the way we evolve as humans, particularly in the realm of self-discovery and exploration. For example, imagine a consumer browsing a physical bookstore, picking up books and reading the back cover blurbs, flipping through pages, and exploring new genres and authors. This consumer journey is one of discovery and exploration, allowing the individuals to connect with new ideas and perspectives outside of their usual preferences.

However, in the world of online book recommendations, AI algorithms use past reading behavior to suggest books, leading to a more constrictive journey of self-discovery. Rather than exposing readers to a wider range of genres and

authors, these algorithms reinforce and amplify what the reader has already read. This can lead to a narrower view of literature and stifle the ability to explore new ideas and perspectives. By limiting the consumer's options and exposure, generative AI may hinder the journey of self-discovery and exploration, and ultimately impact the evolution of human creativity and innovation.

Conclusion

Although the rise of AI has the potential to revolutionize human creativity, it also raises concerns about whether it will ultimately diminish our imaginative capabilities. While AI can democratize access to creative tools, it can also create dependencies and hinder the development of our unique creative abilities. Nevertheless, technology designed for human-machine co-creation can assist and empower humans in their creative endeavors. To fully realize the potential of AI, we must recognize the need for collaborative approaches that integrate human intuition, experience, and innovation with the power of AI. As a society, we cannot afford to outsource creativity entirely to machines; we must continue to harness human creativity at all levels to drive innovation and progress. In doing so, we can use AI as a tool to enhance our creative abilities, rather than allowing it to supplant our unique perspectives and imaginative potential.



Lab45 is a visionary space developing ground-breaking solutions to foster and accelerate ideation throughout Wipro.

At Lab45, engineers, research analysts, and scientists come together to infuse creative ways of incubating solutions for customers that will transform the future. It is a space filled with ambition at the vanguard of far-reaching research across cutting-edge technologies.

Established with the Silicon Valley culture of free-flowing creativity, Lab45's goal is to make bold ideas a reality and to invent the future of enterprise. So come, collaborate, and see what happens when ideas are left unbound.

[Feedback](#)

[Click to Know More](#)

Disclaimer: This report was created using various sources such as expert interviews, internet reports, website research and media releases. This information is collated in good faith and used on an as is and as available basis by us. Our reports should only be construed as guidance. We assert that any business or investment decisions should not be based purely on the information presented in our reports. We do not guarantee or take responsibility for the accuracy, completeness, reliability and usefulness of any information. The opinion expressed in the reports is our current opinion based on the prevailing market trends and is subject to change.



Ambitions Realized.

Wipro Limited

Doddakannelli, Sarjapur Road
Bengaluru – 560 035, India
Tel: +91 (80) 2844 0011
Fax: +91 (80) 2844 0256
wipro.com

Wipro Limited (NYSE: WIT, BSE: 507685, NSE: WIPRO) is a leading technology services and consulting company focused on building innovative solutions that address clients' most complex digital transformation needs. Leveraging our holistic portfolio of capabilities in consulting, design, engineering, and operations, we help clients realize their boldest ambitions and build future-ready, sustainable businesses. With over 250,000 employees and business partners across 66 countries, we deliver, on the promise of helping our customers, colleagues, and communities thrive in an ever-changing world.

For more information, please write to us at info@wipro.com