

THINK TANK
BY LAB45

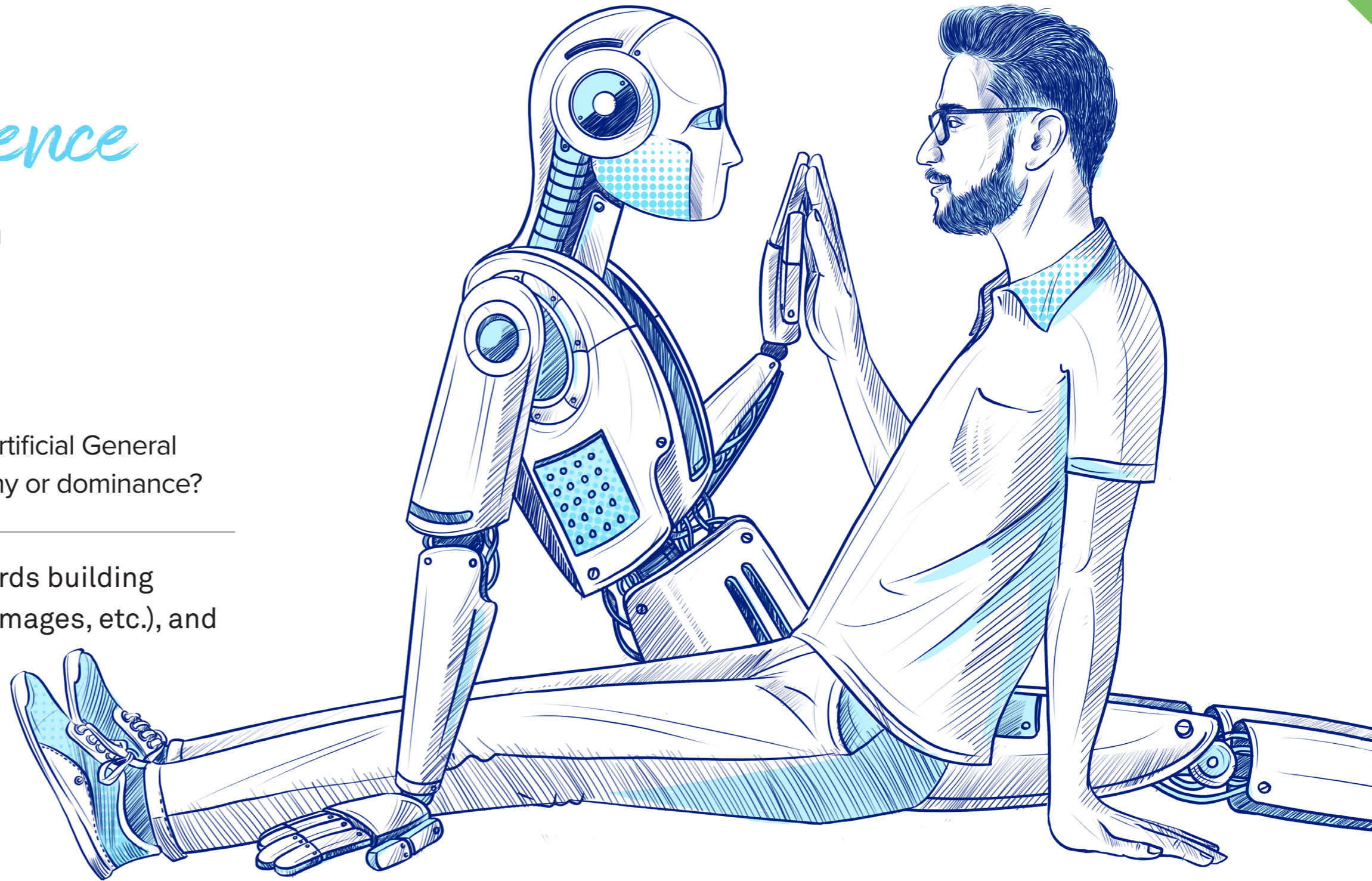
EARTH DAY SPECIAL

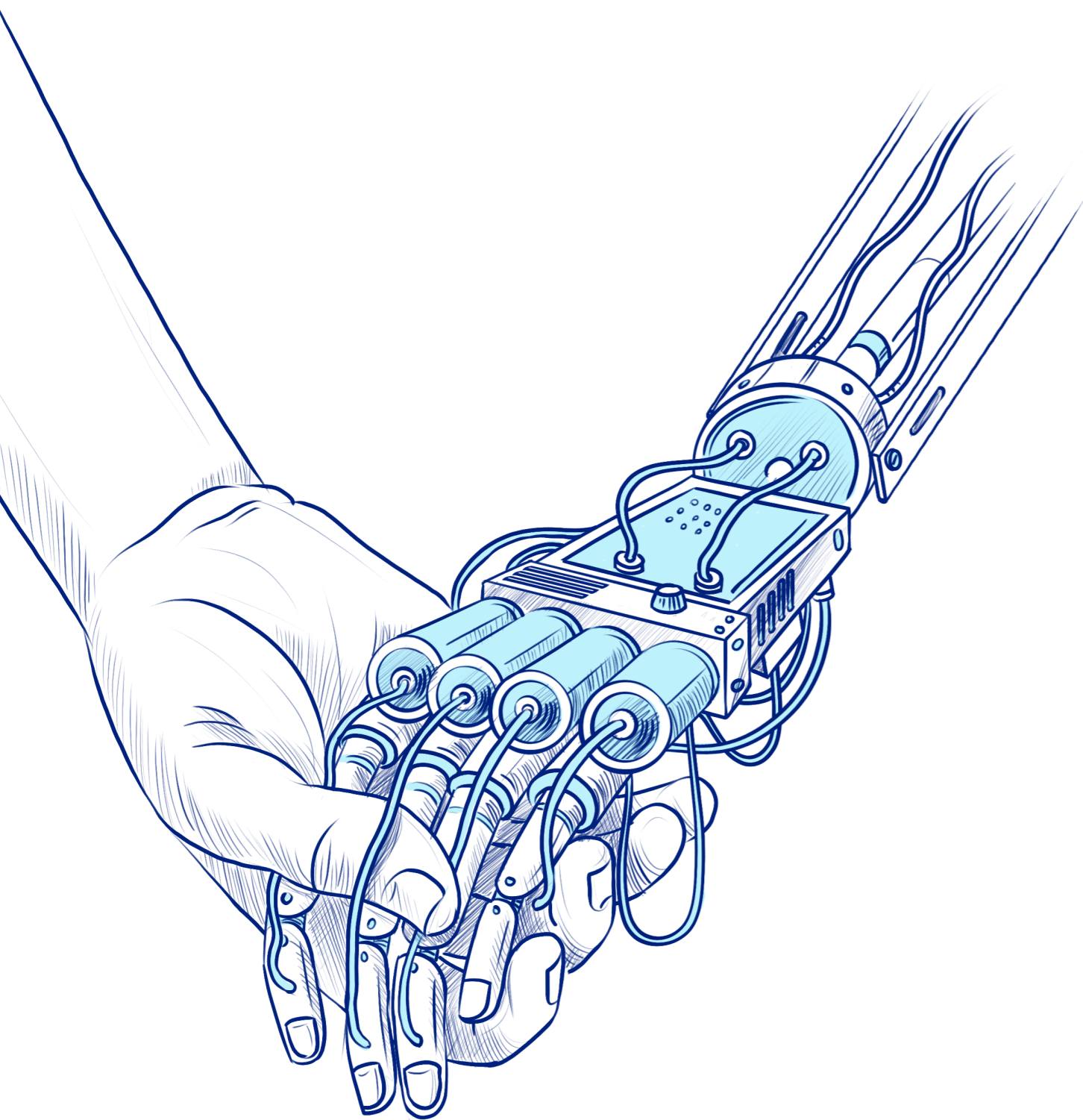
Higher Order Intelligence Dominance or empathy?

**Break
the box**

Arvind Ravishunkar contemplates how Artificial General Intelligence would treat humans: empathy or dominance?

There is rapid scientific progress being made towards building artificial intelligence in different modalities (text, images, etc.), and it is hard not to see a future where eventually it will converge into some form of Artificial General Intelligence. If/When it does, I can't help but wonder how such an intelligence in the future would treat humans. "Would it be empathetic, or would it be dominant?"





There is a growing movement towards more empathy towards life forms around us.

polymers and then dump them in oceans, we introduce chemicals into organic matter without regard to life forms in the soil, and the host of actions is endless. If intelligence means dominance, we are doing a fantastic job.

But this path of dominance is not the universal human path. There is a growing movement towards more empathy towards life forms around us. Preservation of biodiversity, local and organic eating, reduction of plastics, plant-based diets, and free-range farming are just some starting examples of humans with more empathy. I personally believe that empathy is a higher order intelligence since it is inclusive. Dominance is a historical concept.

I have a companion in my home. She is 6 years old, and she has 4 paws. Her name is Maple. When people use the phrase “pet ownership,” I cringe. I don’t own Maple.

How can one life form own another? I am her caretaker and her companion, and vice versa. I want no dominion over other life but rather friendship.

I can understand that the path of empathy is a balancing act since one must weigh the consequences to oneself. However, the path of dominance is also a balancing act since one has to weigh the consequences to other life forms.

There isn’t a right or wrong here, but the question to ask yourself is how would you like a higher form of intelligence to treat you? If you are a fair person, you would want to be treated the way you treat other life forms. It’s an important question since it will inform the lifestyle decisions you make.



Lab45 is a visionary space developing ground-breaking solutions to foster and accelerate ideation throughout Wipro.

At Lab45, engineers, research analysts, and scientists come together to infuse creative ways of incubating solutions for customers that will transform the future. It is a space filled with ambition at the vanguard of far-reaching research across cutting-edge technologies.

Established with the Silicon Valley culture of free-flowing creativity, Lab45's goal is to make bold ideas a reality and to invent the future of enterprise. So come, collaborate, and see what happens when ideas are left unbound.

[Feedback](#)

[Click to Know More](#)

Disclaimer: This report was created using various sources such as expert interviews, internet reports, website research and media releases. This information is collated in good faith and used on an as is and as available basis by us. Our reports should only be construed as guidance. We assert that any business or investment decisions should not be based purely on the information presented in our reports. We do not guarantee or take responsibility for the accuracy, completeness, reliability and usefulness of any information. The opinion expressed in the reports is our current opinion based on the prevailing market trends and is subject to change.



Ambitions Realized.

Wipro Limited

Doddakannelli, Sarjapur Road
Bengaluru – 560 035, India
Tel: +91 (80) 2844 0011
Fax: +91 (80) 2844 0256
wipro.com

Wipro Limited (NYSE: WIT, BSE: 507685, NSE: WIPRO) is a leading technology services and consulting company focused on building innovative solutions that address clients' most complex digital transformation needs. Leveraging our holistic portfolio of capabilities in consulting, design, engineering, and operations, we help clients realize their boldest ambitions and build future-ready, sustainable businesses. With over 250,000 employees and business partners across 66 countries, we deliver, on the promise of helping our customers, colleagues, and communities thrive in an ever-changing world.

For more information, please write to us at info@wipro.com